

EFC Solutions

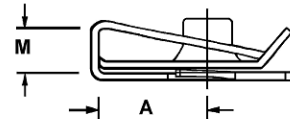
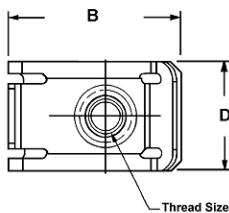
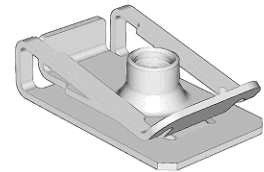
KTO U-NUTS

INTERNATIONAL
ISO 9001:2000

The KTO process is a method of standardization aimed at reducing the number of part numbers. The DaimlerChrysler Fastener Engineering team created a KTO U-Nut family that consists of 6 part numbers and will replace over 30 existing part numbers. In addition to part number reduction, the KTO U-Nut family offers some performance improvements over existing products.

KTO U-Nut Benefits:

- Fits a large range of panel thickness (.5mm – 4.0mm)
- Ergonomically friendly installation
- The threaded barrel always stays perpendicular to panel
- Property Class 8 Threaded Barrels
- Available with or without prevailing torque
- Supplied in PS5873L finish, which is suitable for interior and exterior automotive environments (other finishes available on request).
- Minimizes scratches on painted panels
- Minimizes distortion to plastic panels
- Minimizes the gap required between mating panels



All dimensions are in mm

Thread Size	Thread Pitch	Panel Range	A		B		D		E	P	R	Proof Load (kN)	DaimlerChrysler Part Number				
			Throat Depth	Body Length	Body Width	Body Max	Stock Thick	Panel Hole					Ctr Hole to Edge	Max	Min	Prevailing Torque	Non-Prevailing Torque
M5	.80	.50 - 4.0	13.5	25.5	15.0	16.0	.70	8.55	12.5	12.78	06105239aa	06105240aa					
M6	1.00	.50 - 4.0	13.5	25.5	18.0	19.0	.80	10.15	12.5	18.09	06105241aa	06105242aa					
M8	1.25	.50 - 4.0	14.5	27.7	19.0	20.0	1.00	11.55	13.5	32.94	06105243aa	06105244aa					

Dimensions listed are as punched in blank before forming

For more information, contact EFC International:

St. Louis (Corporate)	800-888-3326	(fax: 314-434-2902)
Chicago	800-727-8466	(fax: 630-539-7070)
Atlanta	800-541-9019	(fax: 770-663-8484)

Explore other EFC Engineering Solutions on-line at: www.efc-intl.com