



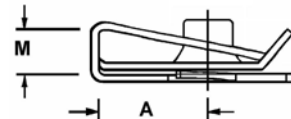
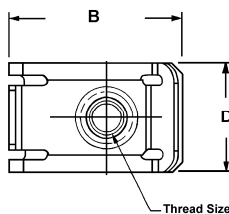
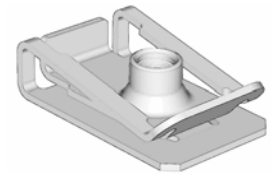
Engineering Solutions

KTO U-NUTS

The KTO process is a method of standardization aimed at reducing the number of part numbers. The DaimlerChrysler Fastener Engineering team created a KTO U-Nut family that consists of 6 part numbers and will replace over 30 existing part numbers. In addition to part number reduction, the KTO U-Nut family offers some performance improvements over existing products.

KTO U-Nut Benefits:

- Fits a large range of panel thickness (.5mm – 4.0mm)
- Ergonomically friendly installation
- The threaded barrel always stays perpendicular to panel
- Property Class 8 Threaded Barrels
- Available with or without prevailing torque
- Supplied in PS5873L finish, which is suitable for interior and exterior automotive environments (other finishes available on request).
- Minimizes scratches on painted panels
- Minimizes distortion to plastic panels
- Minimizes the gap required between mating panels



All dimensions are in mm

Thread Size	Thread Pitch	Panel Range	A Throat Depth ± 0.5	B Body Length ± 0.5	D Body Width		E Stock Thickness Min	P Panel Hole	R Ctr Hole to Edge Max	Proof Load (kN) Min	DaimlerChrysler Part Number	
					Min	Max					Prevailing Torque	Non- Prevailing Torque
M5	.80	.50 - 4.0	13.5	25.5	15.0	16.0	.70	8.55	12.5	12.78	06105239aa	06105240aa
M6	1.00	.50 - 4.0	13.5	25.5	18.0	19.0	.80	10.15	12.5	18.09	06105241aa	06105242aa
M8	1.25	.50 - 4.0	14.5	27.7	19.0	20.0	1.00	11.55	13.5	32.94	06105243aa	06105244aa

Dimensions listed are as punched in blank before forming