

## Push Pin

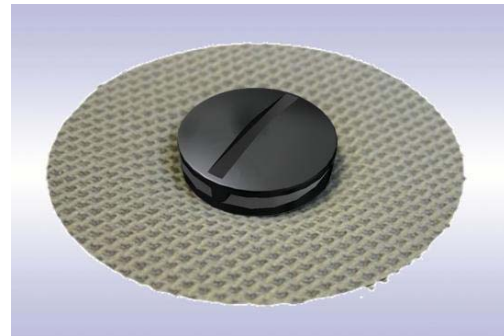
*Perfect for carpet fixing applications!*

### Features & Benefits:

- Double Component, recyclable
- Preassembled for final usage
- Material: POM (Acetal)
- For hole size: 8.0mm
- Panel thickness: 3.0 to 7.0mm
- Insertion force <30 N
- Temperature: -40°C to 100°C



The push pin is an attractive cost, double component solution for carpet fixing applications. The push pin is manufactured in one tool and one injection cycle. Well known push pins with the same function are made from two components and assembled to create a complete assembly. The push pin is ready to be used in the delivery condition. On application of inserting the head into the body, the push pin is securely located to the carpet retained.



Disassembly – by half turn movement of the head the pin will move upwards. The push pin can be removed and is ready for reuse. The head of the pin can be turned with coins or by a screw driver.

The design allows production in higher cavity simple shot tooling. The newly developed push pin is manufactured with plastic injection molding; material will be POM (Acetal). The design may be manufactured also in PP (Polypropylene) or PA (Nylon). Push pins for further hole diameters can be manufactured on request.

