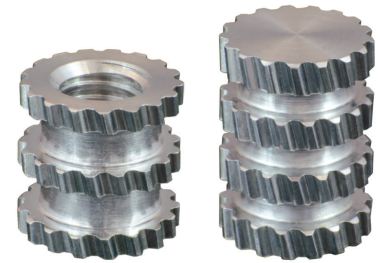


ALUMINUM THREADED INSERTS FOR PLASTICS

Threaded Inserts for Maximum Pull-Out and Torque Performance

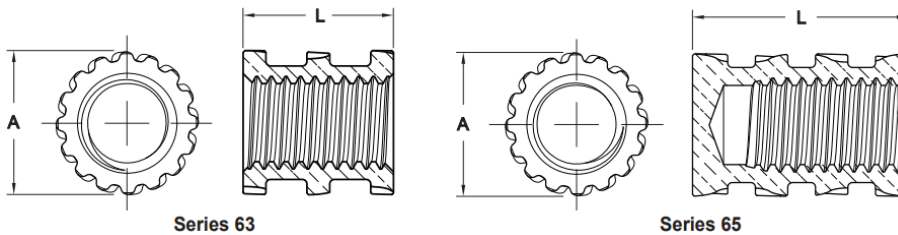
Molded-In Inserts are placed into the mold cavity prior to plastic injection and offer exceptional torque and pull-out resistance due to unrestricted plastic flow.

SPIROL® Molded-In Inserts are designed for maximum pull-out and torque performance, and are often the Insert of choice for thermosets and engineered plastics with a high percentage of filler. The minor thread diameter tolerance is controlled to ensure positive positioning and perpendicularity of the Insert on the core pin during the molding process. Series 63 is symmetrical eliminating orientation. Series 65 is the same body style in a blind ended version. These Inserts are made from 2024 aluminum, a lightweight, lead-free grade.



**Through Hole
Series 63**

**Blind End
Series 65**



Series 63

Series 65

**STANDARD
MATERIAL**

A - Aluminum

**STANDARD
FINISH**

K - Plain

THREAD SIZE	A OUTER Ø	L LENGTH SERIES 63	L LENGTH SERIES 65	MINIMUM # THREADS SERIES 65	MINIMUM MINOR Ø
Tolerance Inch / Metric	Ref. Inch / Metric	±.005 / ±0.13 Inch / Metric	±.005 / ±0.13 Inch / Metric	- Inch / Metric	- Inch / Metric
8-32 / M4 x 0.7	.272 / 6.90	.256 / 6.50	.380 / 9.65	6 / 7	.1365 / 3.289
10-24 / M5 x 0.8	.309 / 7.85	.325 / 8.25	.459 / 11.65	5 / 8	.1495 / 4.229
1/4-20 / M6 x 1.0	.367 / 9.33	.394 / 10.00	.610 / 15.50	6 / 9	.2005 / 4.991
5/16-18 / M8 x 1.25	.463 / 11.75	.463 / 11.75	.697 / 17.70	6 / 8	.2575 / 6.769



REDEFINING THE WORLD OF DISTRIBUTION

CONNECTIONS

EXPERT
PEOPLE

ENGINEERING

QUALITY

LOCAL
SUPPORT
GLOBAL
PRESENCE

LOGISTICS

EFC Is A Solutions Provider.
Innovation Is The Engine That Fuels Our Dedication To Solving Problems.