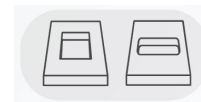
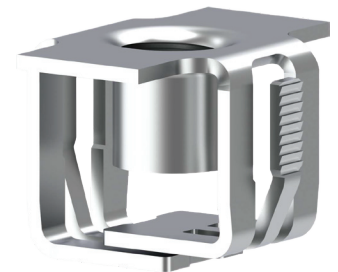


## FLUSH FIT BOX NUT

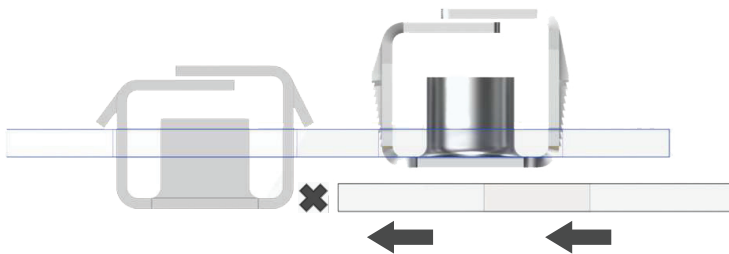
A self-retaining nut solution that sits flush in any orientation while featuring the same performance benefits of a standard box nut

### FEATURES & BENEFITS

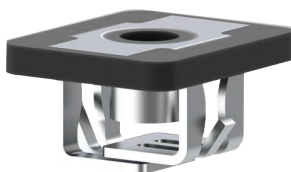
- ▶ **HIGH STRENGTH**  
Achieves performance through the multi-threaded barrel extrusion and excellent retention via expanding legs.
- ▶ **ERGONOMIC INSTALLATION**  
Installs with a single push at 45N (10 LBF) MAX. Automation compatible.
- ▶ **ENABLES LIGHTWEIGHTING**  
Achieves ~50% weight reduction over a cold formed nut while offering same strength properties.
- ▶ **FASTENER STANDARDIZATION**  
Accommodates a range of panel thicknesses and material types.
- ▶ **FLUSH INSTALL**  
Holds flush in all orientations to mitigate assembly interference and aid bolt alignment.



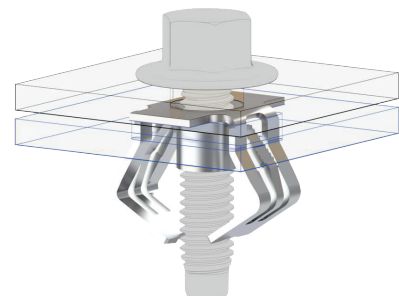
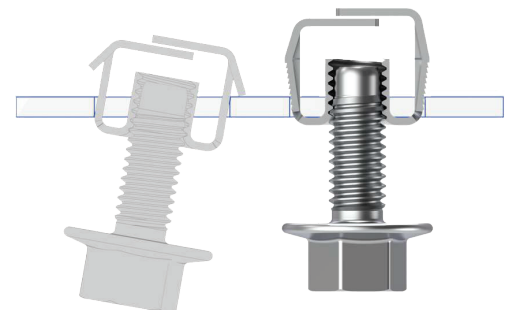
Installs into Square or Rectangular Hole



Remains flush and aligned when installed in inverted applications, minimizing transport damage and aiding in assembly



Silicone pad version for NVH and sealing





# REDEFINING THE WORLD OF DISTRIBUTION



CONNECTIONS



EXPERT  
PEOPLE



ENGINEERING



QUALITY



LOCAL  
SUPPORT  
GLOBAL  
PRESENCE



LOGISTICS

EFC Is A Solutions Provider.  
Innovation Is The Engine That Fuels Our Dedication To Solving Problems.