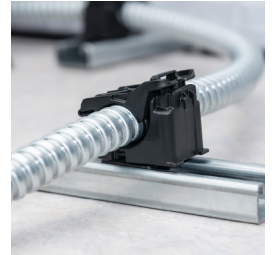




INLINE RATCHET CLAMPS FOR STRUT

Ultra-Fast Installation & Versatility for Routing Management

Inline Ratchet Clamps offer ultra-fast installation and versatility for managing flexible conduit, tubing and cables. The built-in strut mount attaches with a simple twist. A one-piece design makes it simple to install. The robust, adjustable clamp closes by hand to the desired diameter. A release feature allows easy and nondestructive maintenance simply by using a flat-head screwdriver. In this way, the clamp can be reused or serviced without removing it from the strut.



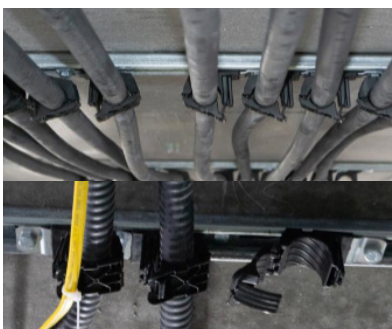
FEATURES AND BENEFITS

- ▶ Clamp and mount combination means no extra hardware is needed, for time-saving, toolless, one-handed installation.
- ▶ One-piece ratchet closure is easier to open than standard metal clamps, for time-saving, toolless, one-handed installation.
- ▶ Three size ranges handle diameters from 0.5" to 2", reducing part inventory.
- ▶ Clamp saddle provides additional attachment option using a cable tie.
- ▶ Plastic construction is safe on bundles, won't chafe or crush.
- ▶ Impact modified, heat and UV stabilized PA66 provides long-term durability, indoors and out.
- ▶ Available in 25/bag and 200/carton.



Contact ISC for additional information or engineering support.

TARGET MARKETS



**COMMERCIAL
CONSTRUCTION**



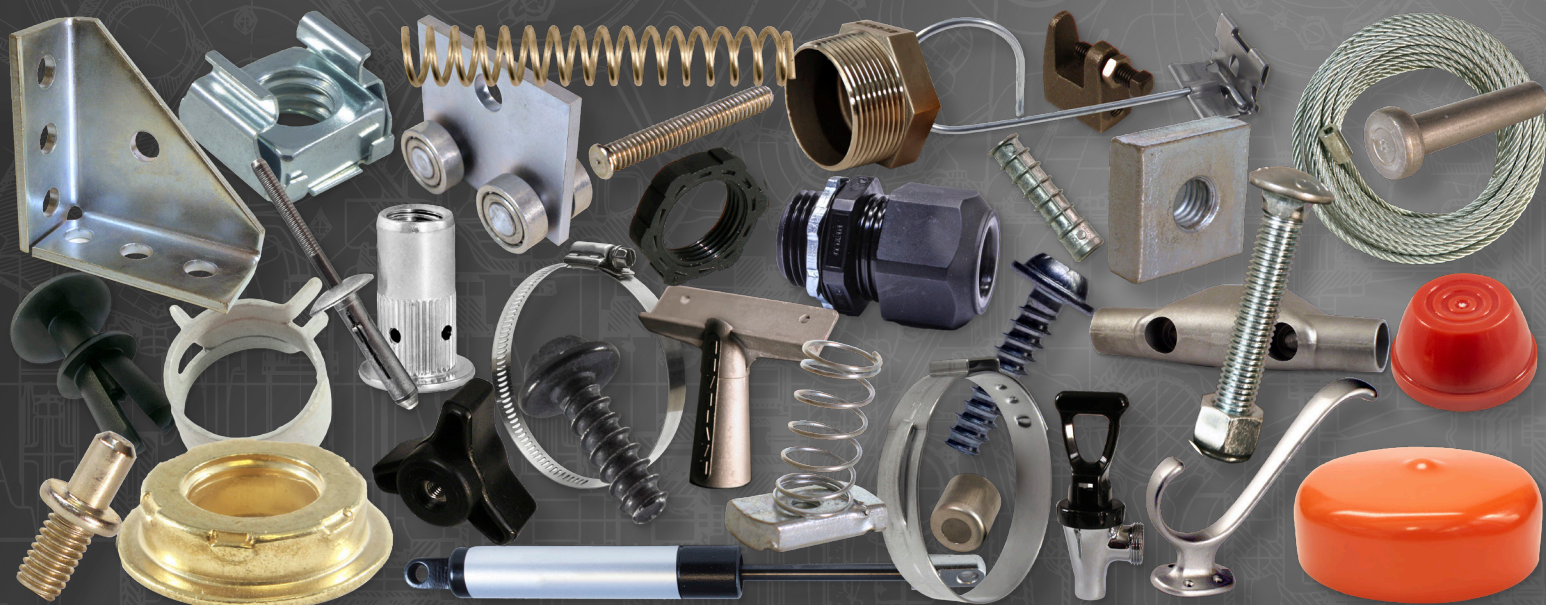
MACHINE BUILDERS



MRO



ENGINEERED SOLUTIONS



WHERE THE CUSTOMER IS KING



FASTENERS • STRUT • WELD STUDS • SIGN HARDWARE • FABRICATION

Serving Your Needs for Over 50 Years

ST. LOUIS • KANSAS CITY • ST. ELIZABETH

A DIVISION OF

EFC
INTERNATIONAL
.....