



CHALLENGE

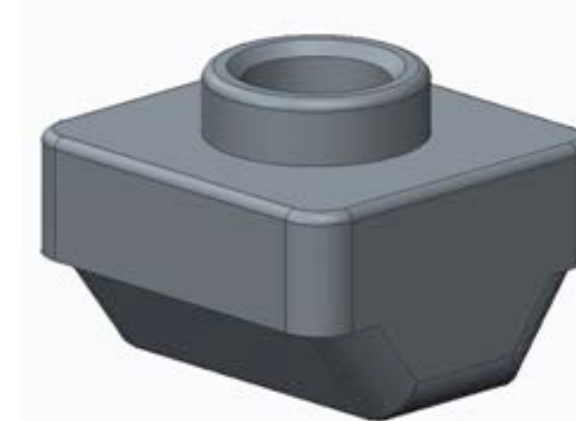
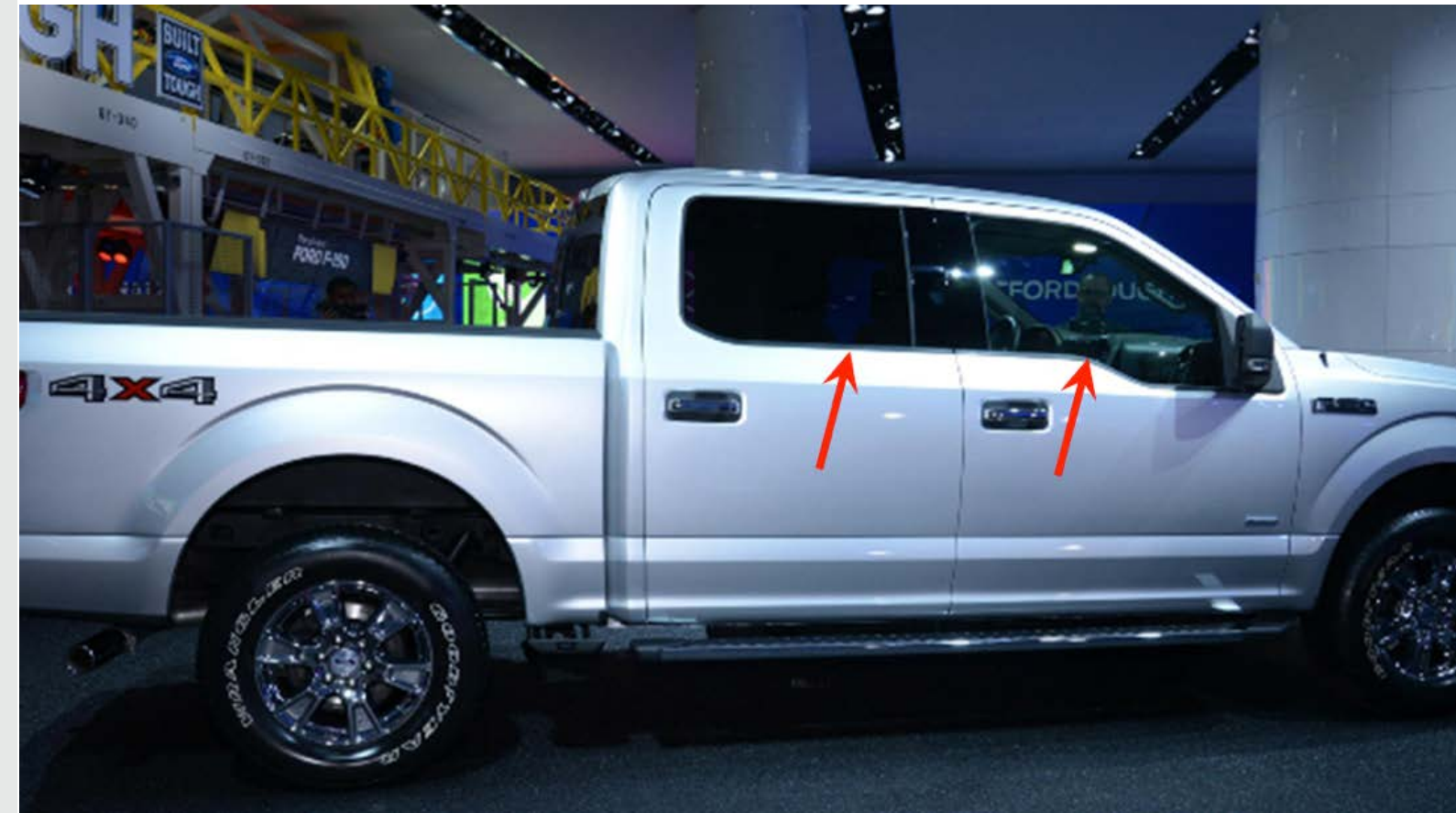
Develop fastening solution to attach a unique molded plastic/rubber belt moldings on new aluminum truck doors.

SOLUTION

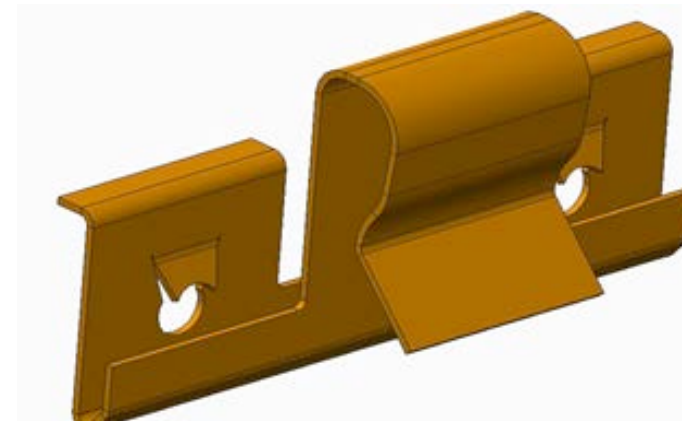
Successfully designed/developed robust fastening solution which consisted of 3 parts.

RESULT

Sourced business on entire F-Series ½ & ¾ ton trucks.



END OF BELT NUT:
08800515-A03 (New Tool)



S-CLIP: EFC P/N
18S000241-S450 (New Tool)



TRIM CLIP: EFC P/N
11X00005- G19

FORD F-150

Belt Molding