



## CHALLENGE

EFC was informed that operators were snapping fascia tabs due to screw/nut binding. This resulted in extensive re-work and very costly fascia replacement. The slowed down process assigned additional an operator for nut replacement and re-install. Other setbacks included constant monitoring of problem by team leader.

## SOLUTION

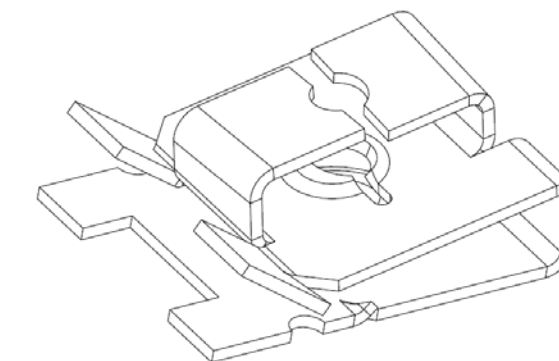
EFC's engineering team offered a solution (EFC Part #166000951-F213) to the on-going intermittent quality problem, and has eliminated fascia damage, re-work or replacements.

## RESULT

The problem has been solved, along with an annual cost-savings over \$150,000.



EFC Part #  
166000951-F213



**JEEP**  
**CHEROKEE**

WHEEL LINER ASSEMBLY